

D31

Marshall Gambit

RACC Gambits REP

22.12.2016

[Upper,John]

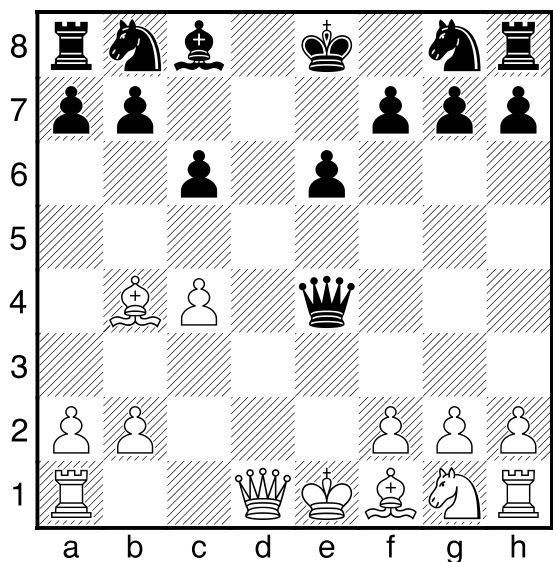
1.d4 d5 2.c4 c6 3.♘c3 e6

Black is hoping to take and keep the ♖c4. White can play e3 to defend the c4-pawn with the ♙f1, but that blocks the ♙c1, and Black is OK with both ...♘f6 (Meran Semi Slav) and ...f5 (Dutch Stonewall).

So... **4.e4!? dxe4 5.♘xe4 ♙b4+**

6.♙d2 6.♘c3 avoids gambiting the d4-pawn, but Black is reckoned to be fine after either 6... e5 or 6...c5

♙xd4 7.♙xb4 ♙xe4+



Starting Position of Marshall Gambit RACC Gambit Tournament.

White has given up a center pawn for

- 1) the Bishop pair
- 2) play on the dark squares
- 3) development off the exposed black ♙.

Note that the dark-square play is long-lasting, and White can even trade ♙s to keep an initiative into an endgame.

STATS

1500+ games in MegaBase

White 57% and Elo +30.

Computer Eval:

Stockfish8 rates it 0.00 at 25 ply after either ♙e2 or ♘e2.

8.♙e2 this was Marshall's original move and is still the main line. White is prepared to give up a second pawn (on g2) for even more development.

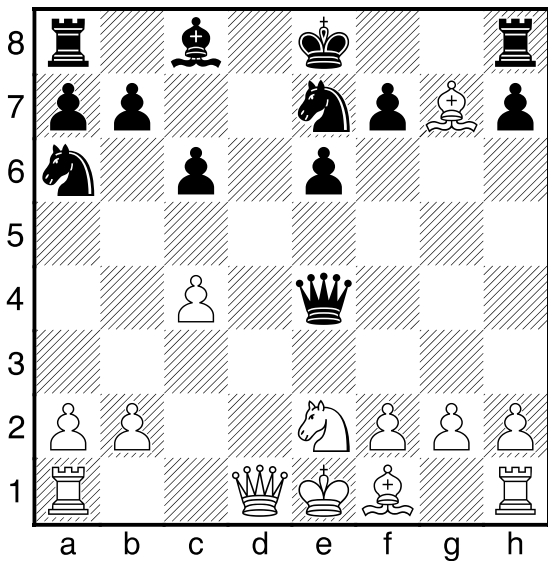
[8.♘e2 Less common than 8 Be2, but equally playable, the text is also not as generous because White gets to keep the g-pawn. In fact in this line it is the g7-pawn that tends to drop, after which White aims to make his presence felt on the dark squares. - Dunnington

A) 8...♘d7 9.♙d6 a5!? 10.♙a3 ♙e5 11.♙d2! White will be down a pawn, but gets more development off the exposed Black ♙. The main line here follows an old game where Jean Hebert shows how strong White's attack can be: (11.0-0-0 ♙xd6 12.♙xd6 ♘gf6 13.f3 b6 14.♘d4 ♙b7 15.♙d3 ½-½ (37) Plat, V (2519)-Shankland,S (2679) Baku 2016) 11...c5 12.f4 ♙e4 13.0-0-0 ♘e7 14.♘c3 ♙c6 15.♙d3 0-0 16.g4↑ ♙e8 17.♙he1 ♘f8 18.♙e5 ♙d7 19.♘b5 (19.♙xc5±) 19...♙ec8 20.♙xc5 ♙b6 21.♙xc8 ♙xc8 22.♘d6 ♙c7 23.♙b1! ♙c6 24.f5! exf5 25.gxf5 (25.c5 ♙a7 26.gxf5+-) 25...♙d4 26.♙xa5 b6 27.♙e1 ♙d7 28.♙c2 ♙f4 29.♙d2 ♙h6 30.♙e2 ♙f6 31.♘e8! 1-0 (31) Hebert,J (2435)-Ristic,N (2300) Montreal 1995;

B) 8...♘a6

B1) 9.♙c3!? can lead to some crazy complications: e5 (9...f6∞) 10.♙d6 f6 11.0-0-0 (11.f3

♙e3∞) 11...♙f5 12.♘d4□ ♚b1+
 13.♚d2 ♜d8 14.♙xd8+□ ♚xd8
 15.♘e6+! ♚e7 16.♜xb1□ ♙xb1
 17.♘xg7 ♙g6̄ White has to go
 into contortions to save the ♘g7.;
B2) 9.♙f8! ♘e7 (9...♚xf8??
 10.♙d8#; 9...♙g6 10.♘f4! ♙g5
 11.♙d6 ♘e7□ 12.h4→) 10.♙xg7



Black has two reasonable tries, both of which seem to be equal, but in different ways: ...♜g8 leads to equal endgames where either side might win, ...♘b4 is very sharp, but seems to end in perpetual checks.

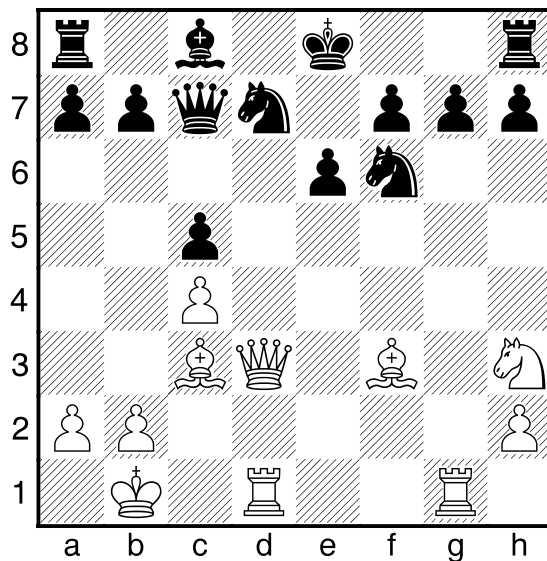
B2a) 10...♜g8 11.♙d4 (11.♙f6; 11.♙c3!?) 11...♙xd4 12.♙xd4 c5 White has 2 ♙s in an endgame, but Black is probably fine.;

B2b) 10...♘b4!? 11.♙xh8!? (11.♙d6 ♘d3+ 12.♚d2 ♘f5 13.♙xd3 ♙xd3+ 14.♚xd3 ♘xg7= 1/2-1/2 (50) Wojtaszek,R (2733)-Giri,A (2750) Biel 2014) 11...e5 12.♙d6 ♘c2+ 13.♚d2 ♙f5 14.♘g3 (14.♜d1!? ♜d8

15.♙xd8+ ♚xd8 16.♚c1+ ♘d4
 17.♘xd4 ♙b1+ 18.♚d2
 ♙xb2+□ 19.♚e3 ♙c3+
 20.♚e2□ ♙xc4+ 21.♚e1□
 ♙b4+=) 14...♙f4+ 15.♚c3
 ♘d5+ 16.cxd5 ♙d4+ 17.♚b3
 ♘xa1+ 18.♚a3 ♘c2+ 19.♚b3
 1/2-1/2 Volkov,S (2589)-Zhigalko,S
 (2654) Kocaeli 2015]

8...♘a6

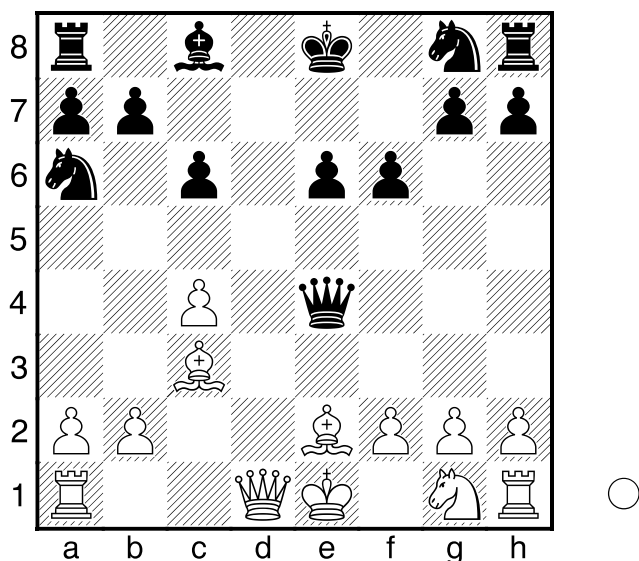
[8...♙xg2!? Is the critical move, but it gives White an even bigger lead in development, so it looks like asking for trouble. 9.♙d6! (9.♙f3!?)
 9...♘d7 (9...♙xh1?? 10.♙f8+ ♚d7
 11.0-0-0+- Black has to give up the ♙ to avoid mate.) 10.0-0-0 ♙xf2
 (10...♙xh1? 11.♙f3+- traps the ♙h1.)
 11.♙f3 ♙e3+ 12.♚b1 ♙e5?!
 (12...a5! 13.♙a3 ♙e5 14.♙d2̄)
 13.♙d3∞ ♘gf6 14.♘h3 c5 15.♙c3
 ♙c7 16.♜hg1±



White is down three pawns, but Stockfish8 rates this position as better for White. g6 (16...0-0? 17.♜xg7+!!+- ♚xg7 18.♜g1+ ♚h8 19.♙xd7!!+-) 17.♙e3 e5 (17...0-0? 18.♙h6+-

threatening Bxd7) 18. Wh6 a5
 19. Ng5+ Ra6 20. Rge1 Rd6 21. Wg7
 Rf8 22. Qxe5 Nxe5 23. Rxe5+ Qd7
 24. Wxf6 1-0 (24) Parligras,M (2565)-
 Sveshnikov,E (2512) Albena 2013]

9. Qc3 f6



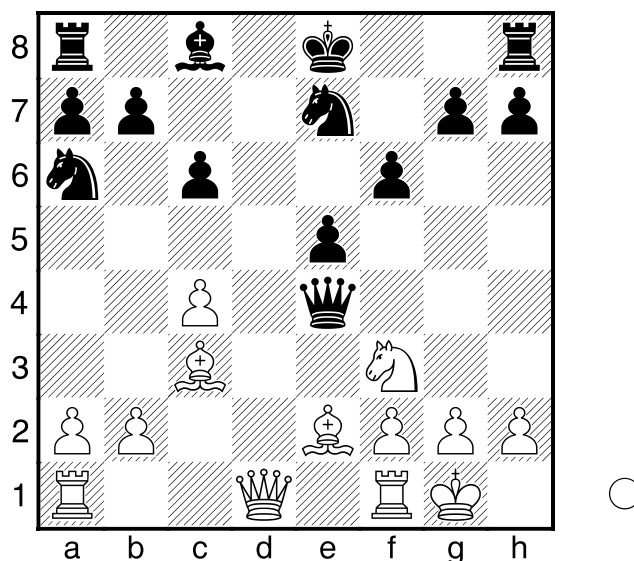
10. Nf3

[10. $\text{Wd6!?$ Despite the fact that this is a very sharp variation, there are still many lines that are almost completely unexplored. This one specifically has never been seen in high level chess - A.Ramirez in ChessBase Nh6 (10...e5!? 11. Nf3) 11. Qxf6!! gxf6 12.0-0-0 Wg6 Stopping Qh5 13. Wd8+ Qf7 14. Wxh8 Nb4 15. Qh5 Qxa2+ 16. Qd2 Wxh5 17. Wxh7+ Qf8 White can force a draw here. 18. Wh8+ Qf7 19. Wh7+ Qf8 20. Nf3+ e5 21. Qe1 Qg4! 22.h3 e4 23. Nd4 Re8 24. Wh8+ Qf7 25. Wh7+ Qf8 26. Ra1 e3 27. Wh8+ Qf7 28. Wh7+ Qf8 29. Wh8+ Qf7 30. Wh7+ 1/2-1/2 (30) Nakamura,H (2772)-Tomashevsky,E (2706) Elancourt 2013]

10...e5

[10... Ne7 11.0-0 0-0 12. Wd2 e5
 13. Rfe1 Qf5 14. Qf1 Wc2 15. Wd6
 Nc8 16. Wa3 dominating the dark
 squares and threatening to trap the W
 with Rac1 . Qd7 17. Rad1 Wf5 18. Qd3
 Wh5 19. Qxh7+ 0-1 (50) Lilienthal,A-
 Kotov,A Tallinn 1945]

11.0-0 Ne7



12. $\text{Nxe5!?$

[12. Re1 0-0 13.b4]
 12...f6 13. Qh5+ g6 14. Re1 Wxc4
 15. Rxe5 gxf6 16. Wd6! Wf7
 17. Rxe7+
 [17. $\text{Rae1!?$]
 [17.f4!]
 17... Wxe7 18. Re1 Wxe1+ 19. Qxe1 Rg8
 20. We5+ Qd8 21. Wf6+ Qc7 22. We5+
 Qd8 23. Wf6+ Qc7 24. Wf4+ Qd8
 25. Wh4+ Qc7 26. Wf4+ Qd8 27. Wf6+
 1/2-1/2 (27) Vaissier,A (2571)-Apicella,M
 (2522) Aix les Bains 2003 Marshall
 Gambit RACC Gambits 2016 [Upper]